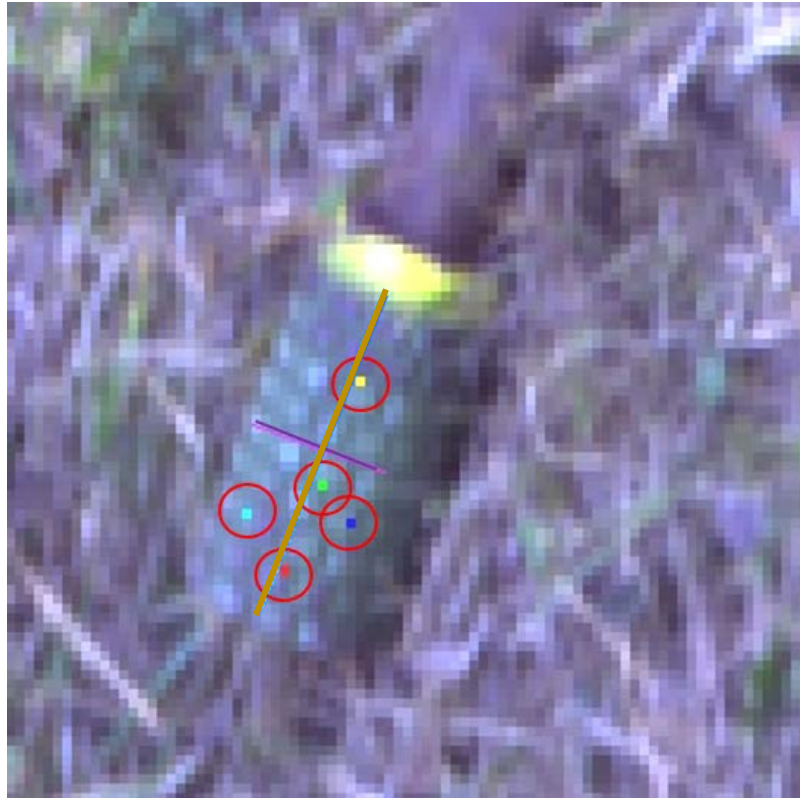


Beyond Spectral Averages: How High-Order Moments Enhance Endmember-Based Material Identification

Milan Bajić, Tehničko veleučilište u Zagrebu, mbajic@tvz.hr

Milan Bajić, Znanstveno vijeće HCR-CTRO, milan.bajic@ctro.hr

Selection 2 of endmembers



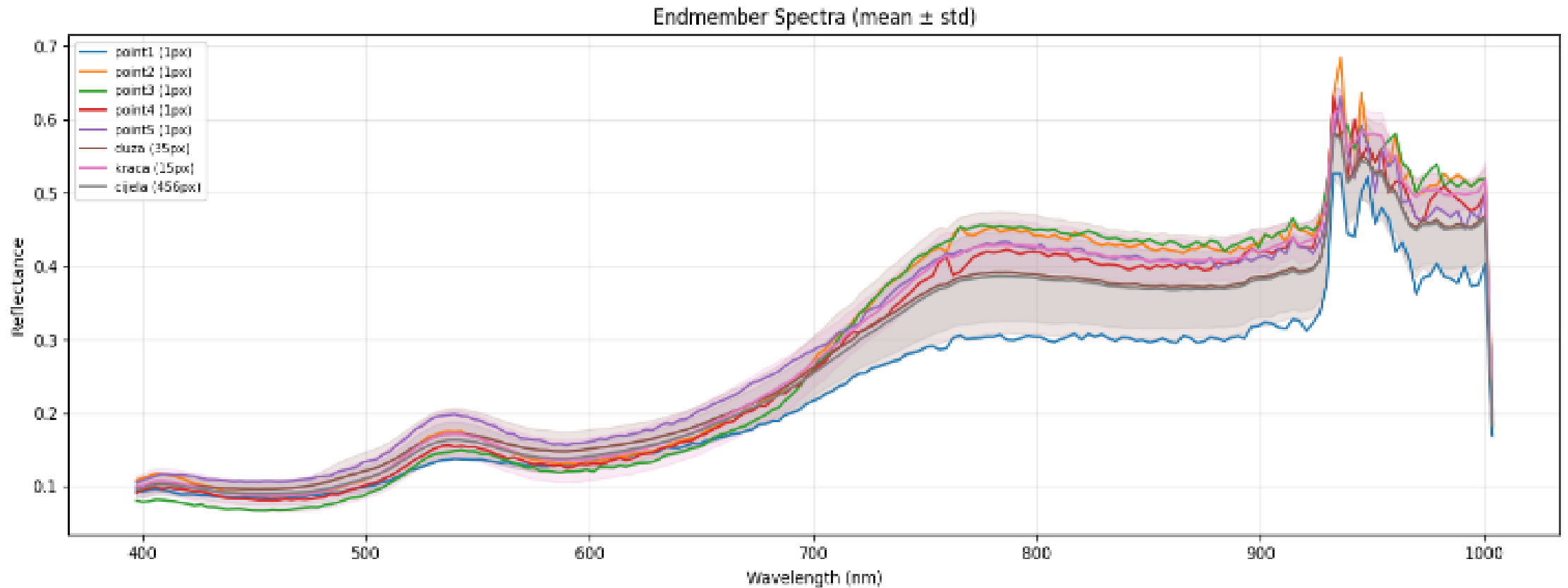
	point1 (1px)
	point2 (1px)
	point3 (1px)
	point4 (1px)
	point5 (1px)
	claza (35px)
	kraca (15px)
	cijela (456px)



There are 456 nedmembers of total mine area.

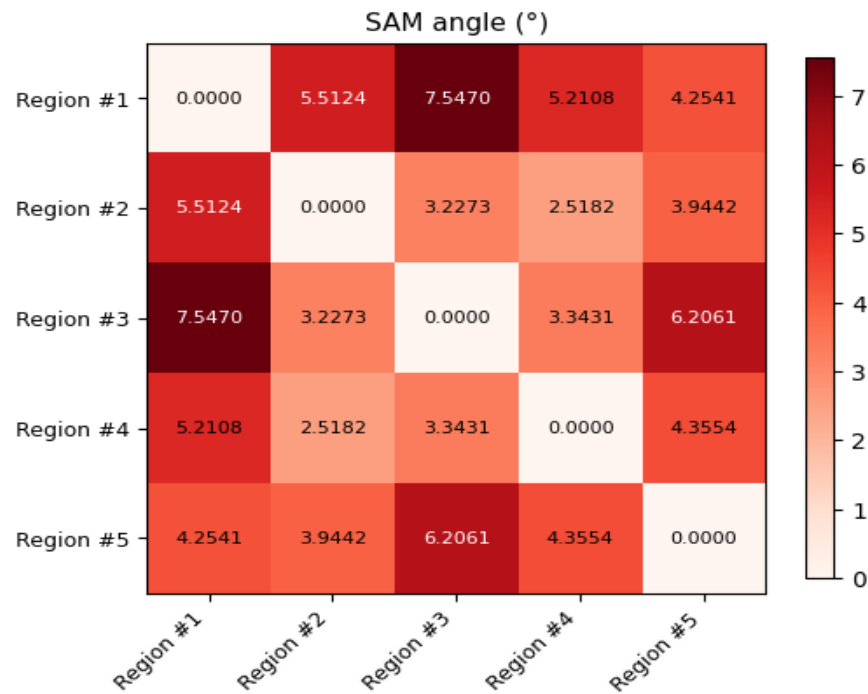
Pixels shown are red, green, blue, yellow and turquoise individual pixels and 15 pink and 35 light brown line pixels used as endmembers.

Spectra of endmembers

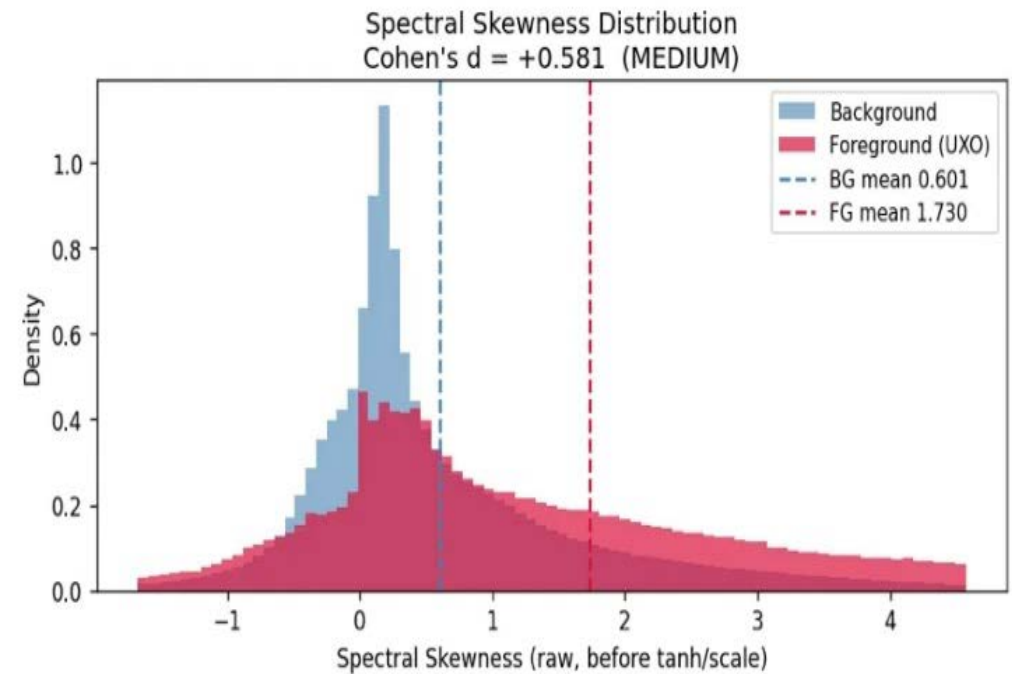


All target area endmember selection. A similarity can be seen between all individual pixel endmembers used

SAM angle variability and Spectral Skewness



Pixelwise variability is shown by matrix between individual pixels measured by SAM angle.



Spectral skewness distribution collected over a large dataset, masked area red (annotation of all objects of interest) and unmasked background blue color.

Discussion

- Hand-picking strategy
- More is less reliable
- Purepixel extraction is not field-applicable
- Lighting sensitivity and change of light between scenes
- Moments are very simple, but a reliable extra dimension

Hvala na pozornosti.
Thank you for your attention.